

# HLW series - LIF / Through hole



## 1.00 mm Spacing for FFC / FPC / CIC

### Features

- Available in 4 to 32 positions
- Right angle and vertical type
- Kinked solder tails available



### Benefits

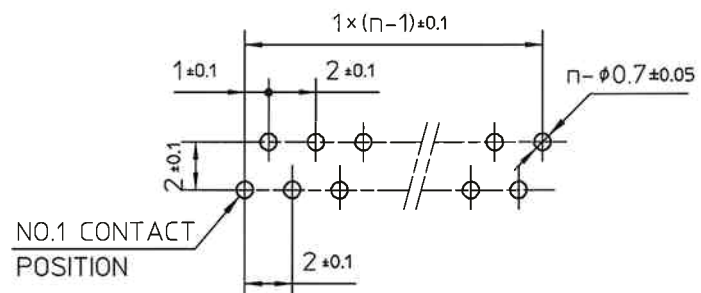
- The Gas-Tight, High pressure (GTH) contact system ensures a low cost connection with reliability equal to gold plating.
- The Low Insertion Force (LIF) contacts positioning provides a reliable and easy mating operation.
- Fork shaped contacts mean stable and low contact resistance.
- Kinked solder tails provide added PCB retention.

### Technical Data

### PC Board pattern (component side)

#### Material

- Housing** : PBT, glass reinforced, UL94V-0, Black  
**Contact** : Phosphor Bronze, Tin alloy plated



THICKNESS : 1.2~1.6

# HLW series - LIF / Through hole



## 1.00 mm Spacing for FFC / FPC / CIC

### Ordering Data

**Series HLW 10 R - 2 C 7**

**No of contacts** 4 to 32

**Terminal type** R = Right angle  
S = Straight

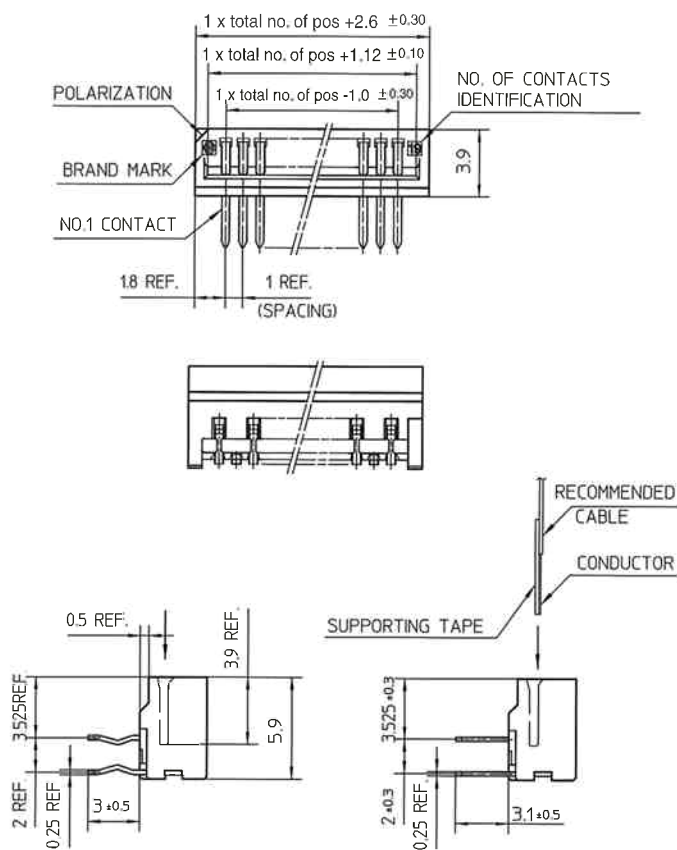
**Cable type** 2 = FPC/FFC  
6 = CIC

**Variation** A7 = non-kinked terminal  
C7 = kinked terminal

**Tray packaging**

### Dimensions

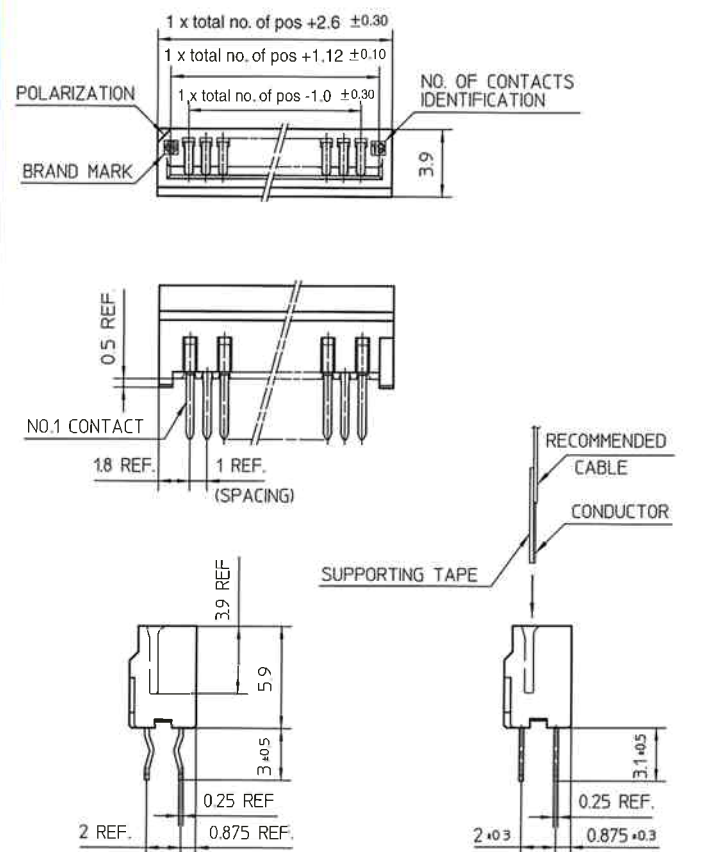
#### Right angle



**kinked terminal**

**non-kinked terminal**

#### Straight



**kinked terminal**

**non-kinked terminal**

**Circuitry Type** For Recommended Circuitry type see page 29